

MAGNESIUM CARBONATE EXTRA LIGHT PHARMACEUTICAL GRADE

Magnesium Carbonate Extra Light Pharmaceutical Grade is compliant to EP and USP

Appearance: White or almost white powder.

Solubility: Practically insoluble in water. It dissolves in dilute acids with effervescence.

Usable as:

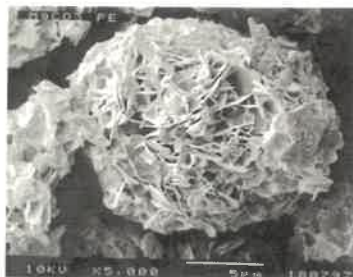
- ✓ Active Substance for pharmaceutical production for human and/or veterinary drugs
- ✓ Excipient for pharmaceutical production for human and/or veterinary drugs
- ✓ Mineral supplements and/or food additive

Chemical Analysis	Specification	Typical value
Carbonate Identification	Positive	Positive
Magnesium Identification	Positive	Positive
Magnesium peak retention time identification	Passes	Passes
MgO content	40,0 – 43,5 %	42,5 %
Acetic solution appearance	Not more coloured than B4	> B4
Insoluble in acetic acid	0,05 % max	< 0,05 %
Insoluble in hydrochloric acid	0,05 % max	< 0,05 %
Soluble salts	1,00 % max	< 1,00 %
Chlorides / Cl	700 ppm max	< 700 ppm
Sulphates / SO ₄	0,30 % max	< 0,30 %
Calcium / Ca	0,45 % max	< 0,20 %
Iron / Fe	200 ppm max	< 50 ppm
Arsenic / As	1 ppm max	< 0,2 ppm
Cobalt / Co	1 ppm max	< 0,2 ppm
Nickel / Ni	50 ppm max	< 1 ppm
Vanadium / V	5 ppm max	< 1 ppm
Lead / Pb	2 ppm max	< 0,2 ppm
Moisture	3,0 % max	2,5 %

Microbial Limits	Specification	Typical value
Total viable count	10 ³ cfu/g max	< 10 ³ cfu/g
Yeasts and Moulds	10 ² cfu/g max	< 10 ² cfu/g
Enterobacteria	Absent	Absent
Escherichia Coli	Absent	Absent
Salmonella	Absent	Absent

Physical Properties	Specification	Typical value
Bulk density	0,15 g/mL max	0,10 g/mL
Particle size: passing 325 mesh / 45µm (wet sieve)	97,0 % min	98,5 %

Packaging
In multiwall paper bags containing 20 kg net on 520 kg pallet.
Retest date: 24 months



Commitment: current ICH Q3D tested and comply for Oral PDE (class 1 and 2A elements)

TECHNICAL DATA SHEET

Rue de l'Usine F - 62132 Caffiers

Tél. 33 (0)3 21 85 02 81 Fax. 33 (0)3 21 35 48 00

Fax. 33 (0)3 21 85 27 80 (Commercial / Sales Dpt)

www.scora.com

Siret 457 506 889 00023 - Société par Actions simplifiée au capital de 23 691 200 €
 R.C.S. Boulogne-sur-Mer 457 506 889 - N° TVA FR 70 457 506 889

Version 04 of 25/04/2022



SCORA